

Overview

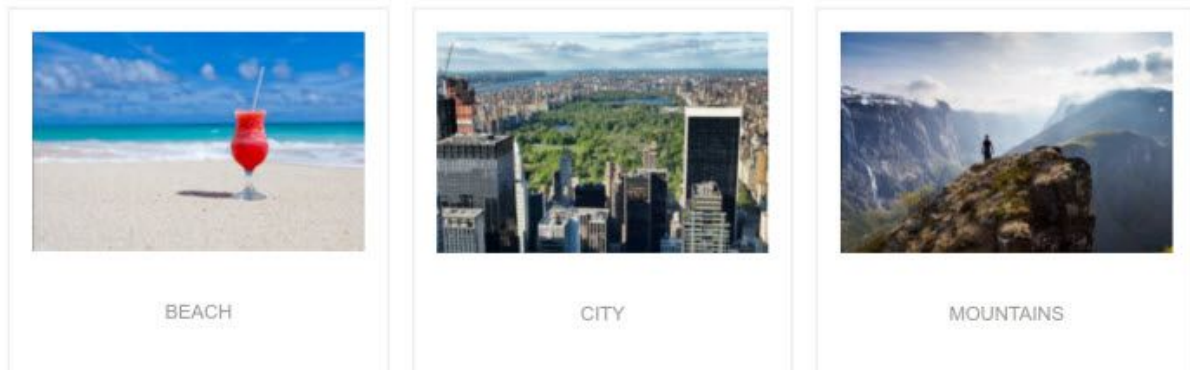
On the 22nd July 2018, Clicktools made key updates to the Clicktools application.

With the July, 2018 release comes the new image question type. The image question type is available in the **Modern Surveys** only.

Image questions offer an entertaining way for your customers to respond to your survey. They can also be beneficial when words are not enough to convey the information that you are hoping to obtain.

Example of the new image question.

1. When you think of your next vacation what do you picture?



Before utilizing the new image question you must first upload the images you want to use into the Clicktools image library. (Images do not count against your accounts storage)

All images are stored in the Clicktools Image Library **Design -> Images**

NOTE: When formatting your images, please ensure that you **do not exceed 5MB** as this may have an impact on the page load speed.

To Upload An Image:

1. Go to **Design** -> **Images**
2. Click **Upload New Image** button
3. Click **Choose** and browse to your image(s).
 - Note: The Dashboard uses GIF, PNG and JPG file formats.
4. Click **Upload**.

Once the images are successfully uploaded into the Clicktools image library you can add them to the image question.

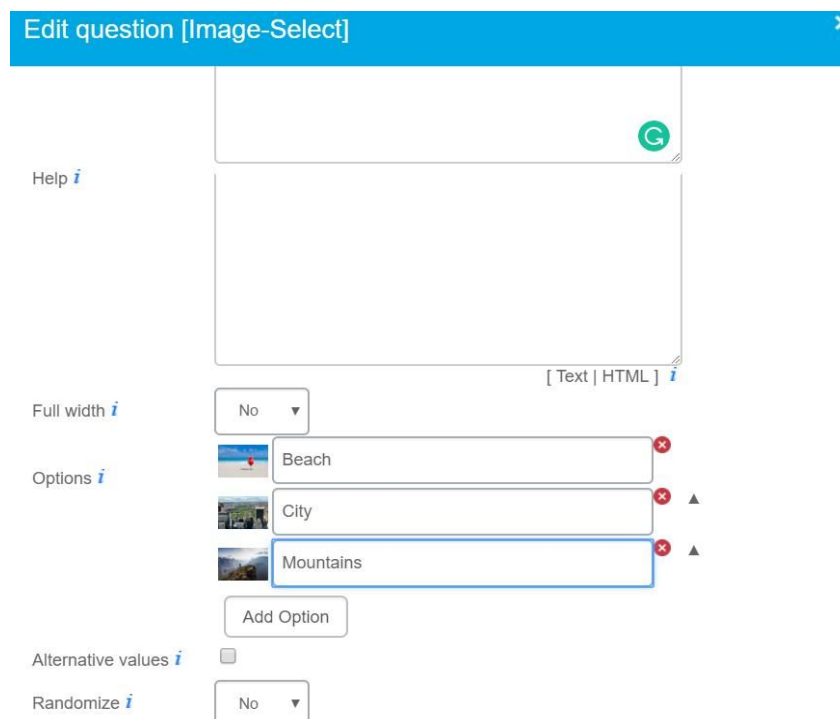
From within the builder of the new **modern survey** select the question from the Modern Builder.



Edit the question

In the Options section, select the pictures you want to use for each option.

Add the information that you would like to store / synchronize for each picture in the Options text box.



The screenshot shows the 'Edit question [Image-Select]' dialog box. It features a blue header with a close button. On the left, there are settings: 'Help' with an info icon, 'Full width' set to 'No', 'Options' with an info icon, 'Alternative values' with an unchecked checkbox, and 'Randomize' set to 'No'. The main area contains a large text input field with a green 'G' icon in the top right corner and a '[Text | HTML]' toggle in the bottom right. Below the text field, there are three option rows. Each row has a small image icon on the left, a text input field in the middle, and a red 'x' icon on the right. The first row is 'Beach', the second is 'City', and the third is 'Mountains'. There are also small upward-pointing triangle icons to the right of the 'City' and 'Mountains' rows. At the bottom of the options list is an 'Add Option' button.

CallidusCloud is ending support for TLS version 1.0 (but we will still support 1.1 and 1.2).

As a result:

IE7 will no longer work - it only supports TLS v1.0

IE 8-10 will only work if the user is on Windows 7 or greater, but will require manual steps on the user's end.

Please see reference: <https://knowledge.digicert.com/generalinformation/INFO3299.html>

Here is a detailed compatibility chart for all browsers:

https://en.wikipedia.org/wiki/Transport_Layer_Security#Web_browsers

Maintenance update

The following update is being applied:

Issue	Comment
SUR-2115	Clicktools Web Tab in Lightning displays correctly.
SUR-2051	Modern Surveys - Added merge variables for survey Exit Page URLs
SUR-2127	Correct field titles on the Credentials manager page.
SUR-2007	Callidus is ending support for TLS 1.0 (All cyphers). To allow for the removal of TLS 1.0 from our web servers, Clicktools will end support for IE9 / IE10
Misc	Application security updates.